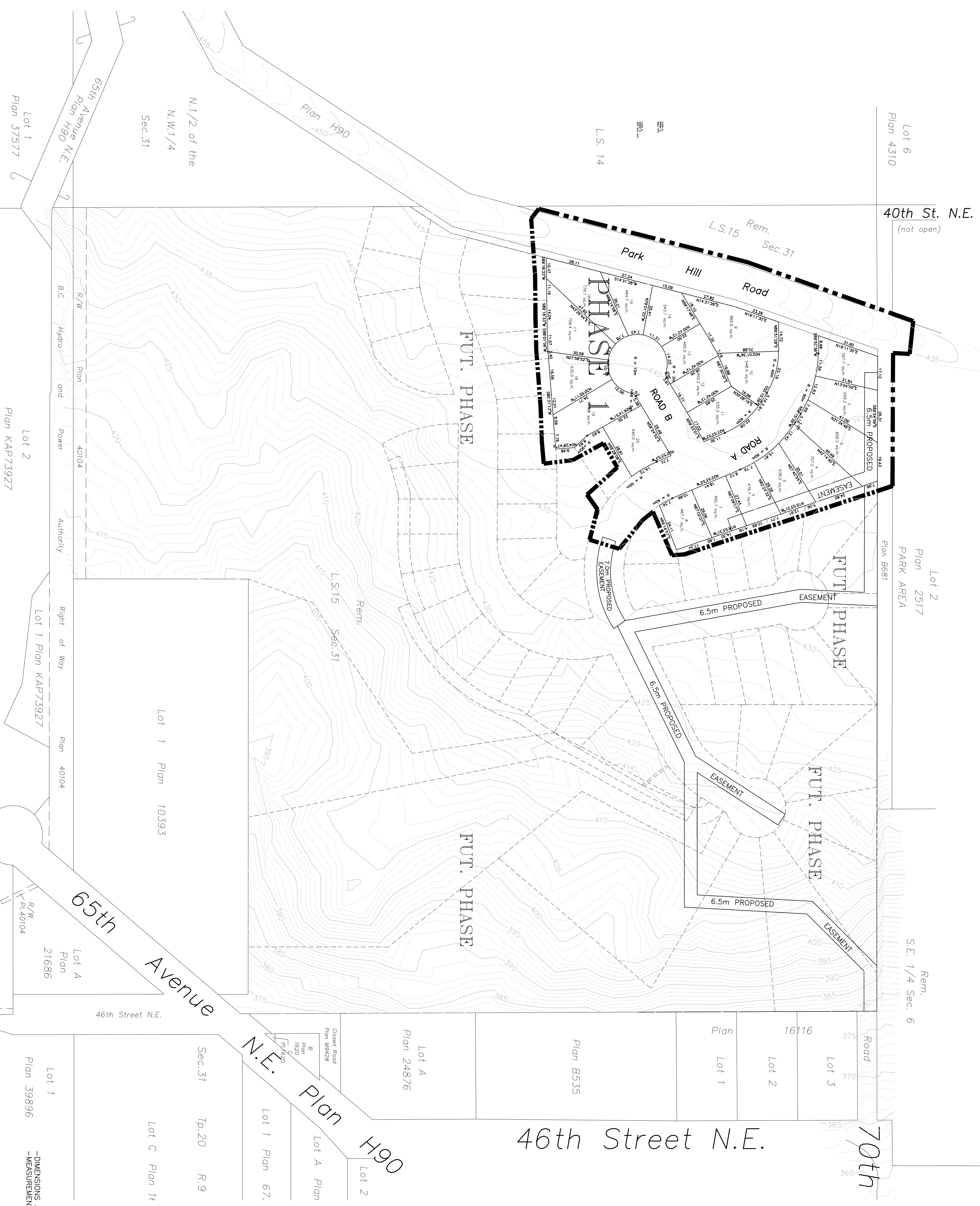
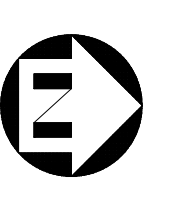


PRELIMINARY PLAN OF PHASE 1 OF THE
 PARK HILL SUBDIVISION
 OF
 PART OF AMENDED LEGAL SUBDIVISION 15 OF
 SECTION 31, TOWNSHIP 20, RANGE 9 W6M, KD0D.
 EXCEPT PLANS 10393 AND 21686



| | | |
|------|----------|--------------------------------------|
| REV. | DATE | DESCRIPTION |
| 1 | 02-06-08 | APPLICATION FOR SUBD. PRELIM. REVIEW |

| | |
|---------|-------------------------------|
| Scale | 1:3800 |
| Client | PETER KINGMA |
| Project | PARK HILL SUBDIVISION PHASE 1 |

OMEGA & ASSOCIATES
 ENGINEERING LTD.
 CONSULTING CIVIL & STRUCTURAL ENGINEERS
 CHILLIWACK (604)795-8682 • SAUNDY BAY (250)833-5643

| | |
|---------------------|------------|
| DATE | 24-04-2008 |
| DESIGNED BY | DA |
| DATE | 14-11-2007 |
| APPROVED/CHECKED BY | PD |
| DATE | 23-04-2008 |

TITLE
PARK HILL SUBDIVISION
APPLICATION FOR PRELIMINARY
SUBDIVISION REVIEW

DRAWING NO.
07-035-C-01
 SHEET
 10/1

-DIMENSIONS ARE APPROXIMATE. PLAN MAY DIFFER
 -MEASUREMENTS ON CURVES ARE LENGTHS ALONG CIRCUMFERENCE